

LIFE17 CCA/IT/000080



Co-funded by
LIFE programme of the European Union



Enhancing climate change adaptation strategies
and measures in the Metropolitan City of Milan

What is LIFE Metro Adapt?

It's a EU funded project to mainstream climate
change adaptation strategies in the Metropolitan
Area of Milan

How?

By fostering the creation of a shared
governance related to climate
change adaptation among the local
authorities and produce tools that

Who?

Donors

European Commission – Programme
for the Environment and Climate

allow local authorities to implement cost-effective climate change adaptation strategies and policies adapted to the local context.

By sharing and disseminating the project tools and good practices with other Italian and European metropolitan areas.

When?

From Sept. 2018 to Sept. 2021

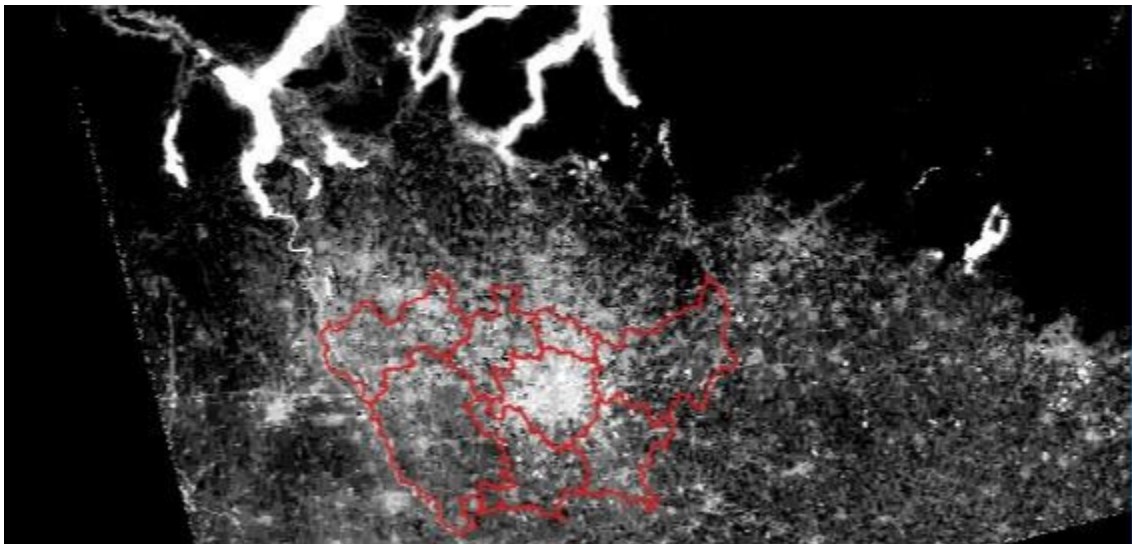
Action ([LIFE](#))

Partners

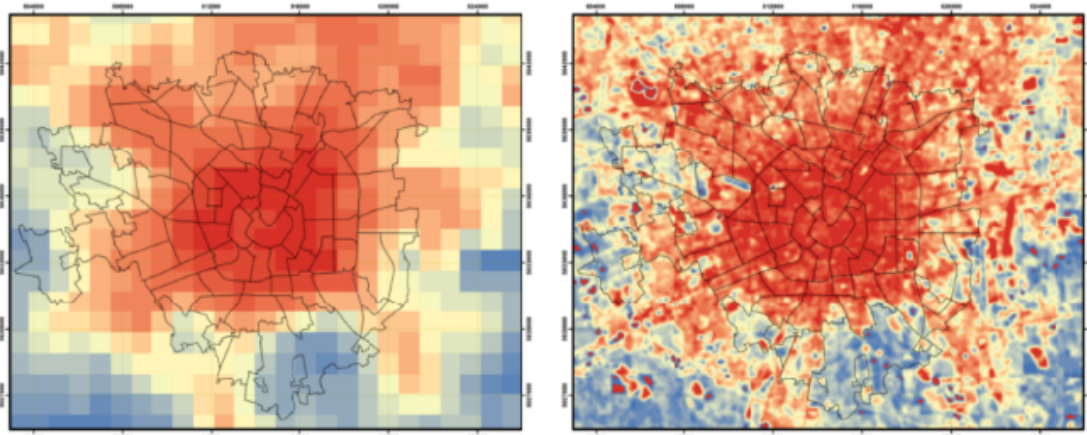
- [Metropolitan City of Milan](#) (coordinator)
- [Alda](#) - European Association for Local Democracy
- [Ambiente Italia SRL](#)
- [Gruppo CAP](#)
- [e-GEOS](#)
- [Legambiente Lombardia](#)

[Read More](#)

Project updates



Ambiente Italia, Gruppo CAP and e-GEOS are carrying out methodologies and database analysis for the identification of the main vulnerabilities of the territory related to climate change



Local entities will use this data to choose the most appropriate measures to mitigate climate change



Metro Adapt was mentioned by GRUPPO CAP at ECOMONDO fair as part of the session on *Land Modeling and design criteria for hydraulic risk mitigation and prevention*



The project website is ready! Want to know more about the project?

Check the website!

News from the field

Handbook on sustainable water management

When the natural capacity of the soil to retain water is reduced because of waterproofed land or deforestation, it is necessary to carry out measures to store rainwater in order to avoid flood damages.

How?

The handbook of CAP Group and the University of Milan describes the main solutions to mitigate the effects of meteoric events and shows the modern approaches for the sustainable management of flood runoff in urban areas.

[Read the handbook](#)

What's citizens perception of climate change?

31% of Europeans gives the responsibility to fight against climate change to citizens. 40% of Chinese and 25% of US citizens opt for international organization such as UN and World Bank.

[Read the 2019 report](#)



EnRoute project - urban resilience through green infrastructures

On Jan 29th, local authorities and practitioners from all over Europe gathered in Brussels for the last meeting of EnRoute project. The participating cities shared the green infrastructures they developed to enhance the resilience of their ecosystems.

27th February, Milan

One year after the entry into force of the "Regional regulation on hydraulic invariance", CAP Group, in collaboration with ATO of the Metropolitan City of Milan and the FAST Federation, organizes a seminar to assess the current situation and discuss the complex relationship between water and cities.

[Read more](#)

Partners' corner



Città metropolitana di Milano

3 key facts about the Metropolitan City of Milan (CMM):

- intermediate public authority between the municipalities and Lombardia region
- about 40.5% of the territory is formed by built-up areas and infrastructures,
- high-density area with 2042.5 inhabitants/km²

What kind of good practices has CMM taken to save the environment?

CMM is the managing authority of the regional park “Parco Agricolo Sud Milano” which forms an agricultural metropolitan belt covering 30% of CMM's surface. We also engaged in Green Public Procurement and we participated in Milan Bike City project.

Which is your “ace in the hole” to fight climate changing?

The Metropolitan Territorial Plan that will impact the technical rules of urban planning of CMM's 134 municipalities.

Why did you choose Life Metro Adapt?

Because of the comprehensive role that the CMM can play in mainstreaming the adaptation measures in its 134 municipalities. This makes the CMM a useful testing ground in the adaptation process to climate change.



Did you like this newsletter?

Subscribe to the next ones!

You will receive one every 4 months with plenty of updates about the project and about climate adaptation strategies all over Europe

Subscribe

"The European Commission support for the production of this publication does not constitute an endorsement of the contents which reflects the views only of the authors, and the Commission cannot be held responsible for any use which may be made of the information contained therein"

Our mailing address is:
metroadapt@aldaintranet.org

Want to change how you receive these emails?
You can [update your preferences](#) or [unsubscribe from this list](#).

